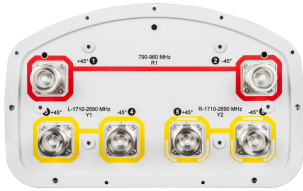


# CVV65BSX-M | CVV65BSX-3X2



6-port sector antenna, 2x 790–960 and 4x 1710–2690 MHz, 65° HPBW, RET compatible

- Utilizes AccuRET® actuator(s) on the back of the antenna

## General Specifications

<b>Antenna Type</b>	Sector
<b>Band</b>	Multiband
<b>Color</b>	Light gray
<b>Grounding Type</b>	RF connector inner conductor and body grounded to reflector and mounting bracket
<b>Performance Note</b>	Outdoor usage   Wind loading figures are validated by wind tunnel measurements described in white paper WP-112534-EN
<b>RF Connector Interface</b>	7-16 DIN Female
<b>RF Connector Location</b>	Bottom
<b>RF Connector Quantity, high band</b>	4
<b>RF Connector Quantity, low band</b>	2
<b>RF Connector Quantity, total</b>	6

## Remote Electrical Tilt (RET) Information, General

<b>Model with Factory Installed AISG 2.0 Actuator</b>	CVV65BSX-3X2
-------------------------------------------------------	--------------

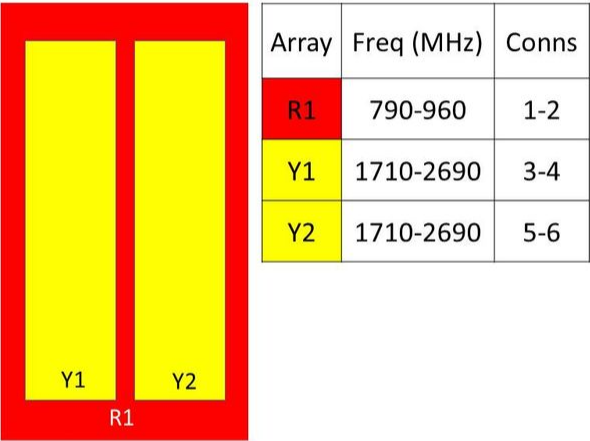
## Dimensions

<b>Width</b>	301 mm   11.85 in
<b>Length</b>	1974 mm   77.717 in
<b>Depth</b>	181 mm   7.126 in

## Array Layout

# CVV65BSX-M | CVV65BSX-3X2

---



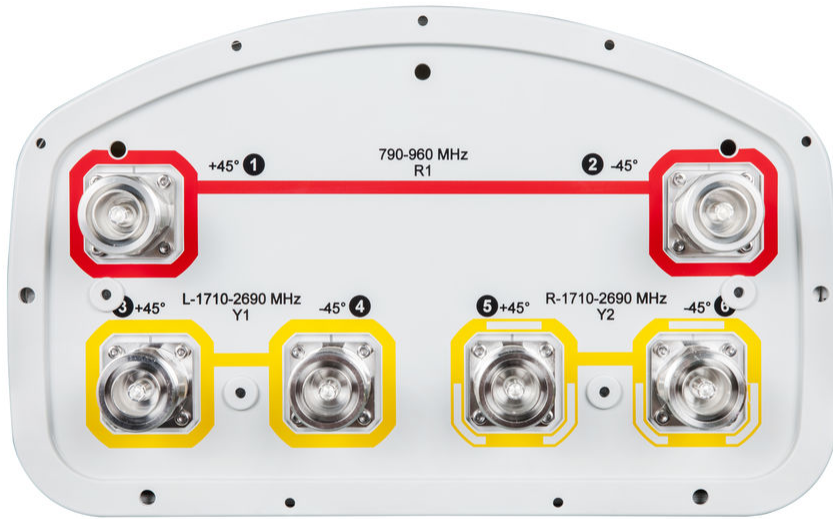
Array	Freq (MHz)	Conns
R1	790-960	1-2
Y1	1710-2690	3-4
Y2	1710-2690	5-6

Left                  Right  
Bottom

(Sizes of colored boxes are not true depictions of array sizes)

## Port Configuration

# CVV65BSX-M | CVV65BSX-3X2



## Electrical Specifications

**Operating Frequency Band**

1710 – 2690 MHz | 790 – 960 MHz

## Electrical Specifications

Frequency Band, MHz	790–896	870–960	1710–1880	1850–1990	1920–2180	2300–2500	2500–2690
Gain, dBi	15.9	16	17.6	17.5	17.9	17.6	18.2
Beamwidth, Horizontal, degrees	62	60.8	70	68	67	58	60
Beamwidth, Vertical, degrees	10.5	9.6	5.6	5.3	5.1	4.3	4.1
Beam Tilt, degrees	0–10	0–10	2–12	2–12	2–12	2–12	2–12
USLS (First Lobe), dB	15	15	14	14	15	14	14
Front-to-Back Ratio at 180°, dB	29	30	29	30	24	26	29

# CVV65BSX-M | CVV65BSX-3X2

<b>Isolation, Cross Polarization, dB</b>	28	28	28	28	28	28	28
<b>Isolation, Inter-band, dB</b>	30	30	30	30	30	30	30
<b>VSWR   Return loss, dB</b>	1.5   14.0	1.5   14.0	1.5   14.0	1.5   14.0	1.5   14.0	1.5   14.0	1.5   14.0
<b>PIM, 3rd Order, 2 x 20 W, dBc</b>	-150	-150	-150	-150	-150	-150	-150
<b>Input Power per Port, maximum, watts</b>	350	350	350	350	350	300	300

## Electrical Specifications, BASTA

<b>Frequency Band, MHz</b>	<b>790–896</b>	<b>870–960</b>	<b>1710–1880</b>	<b>1850–1990</b>	<b>1920–2180</b>	<b>2300–2500</b>	<b>2500–2690</b>
<b>Gain by all Beam Tilts, average, dBi</b>	15.5	15.7	17.4	17.3	17.5	17.4	18
<b>Gain by all Beam Tilts Tolerance, dB</b>	±0.4	±0.4	±0.2	±0.3	±0.5	±0.6	±0.7
<b>Gain by Beam Tilt, average, dBi</b>	0°   15.4 5°   15.4 10°   15.2	0°   15.5 5°   15.6 10°   15.2	2°   17.2 7°   17.4 12°   17.2	2°   17.3 7°   17.5 12°   17.4	2°   17.5 7°   17.8 12°   17.6	2°   17.5 7°   17.9 12°   17.5	2°   17.7 7°   18.1 12°   17.7
<b>Beamwidth, Horizontal Tolerance, degrees</b>	±2.7	±1.8	±3.2	±2.9	±5.5	±5.2	±5.8
<b>Beamwidth, Vertical Tolerance, degrees</b>	±0.8	±0.7	±0.3	±0.2	±0.3	±0.2	±0.2
<b>USLS, beampeak to 20° above beampeak, dB</b>	17	16	16	17	17	16	18
<b>Front-to-Back Total Power at 180° ± 30°, dB</b>	25	27	26	25	23	21	24
<b>CPR at Boresight, dB</b>	24	24	21	21	20	17	17
<b>CPR at Sector, dB</b>	11	11	12	10	10	5	6

## Material Specifications

<b>Radiator Material</b>	Aluminum
<b>Radome Material</b>	Fiberglass, UV resistant
<b>Reflector Material</b>	Aluminum

## Mechanical Specifications

<b>Wind Loading at Velocity, frontal</b>	306.0 N @ 150 km/h   69.2 lbf @ 150 km/h
<b>Wind Loading at Velocity, lateral</b>	253.0 N @ 150 km/h   56.9 lbf @ 150 km/h
<b>Wind Loading at Velocity, maximum</b>	132.4 lbf @ 150 km/h   589.0 N @ 150 km/h
<b>Wind Speed, maximum</b>	241 km/h   149.75 mph

## Packaging and Weights

# CVV65BSX-M | CVV65BSX-3X2

---

<b>Width, packed</b>	411 mm   16.181 in
<b>Depth, packed</b>	298 mm   11.732 in
<b>Length, packed</b>	2161 mm   85.079 in
<b>Net Weight, without mounting kit</b>	18.8 kg   41.447 lb
<b>Weight, gross</b>	32 kg   70.548 lb

## Regulatory Compliance/Certifications

<b>Agency</b>	<b>Classification</b>
CE	Compliant with the relevant CE product directives
CHINA-ROHS	Below maximum concentration value
ISO 9001:2015	Designed, manufactured and/or distributed under this quality management system
REACH-SVHC	Compliant as per SVHC revision on <a href="http://www.commscope.com/ProductCompliance">www.commscope.com/ProductCompliance</a>
ROHS	Compliant



## Included Products

**BSAMNT-OFFSET** — Forward Offset Pipe Mounting Kit for 4.5 in (114.3 mm) OD round members

## \* Footnotes

**Performance Note** Severe environmental conditions may degrade optimum performance

# BSAMNT-OFFSET

---



Forward Offset Pipe Mounting Kit for 4.5 in (114.3 mm) OD round members

## General Specifications

**Application** Outdoor  
**Color** Silver

## Dimensions

**Compatible Diameter, maximum** 114.3 mm | 4.5 in  
**Compatible Diameter, minimum** 61 mm | 2.402 in

## Material Specifications

**Material Type** Galvanized steel

## Packaging and Weights

**Included** Brackets | Hardware  
**Packaging quantity** 1

## Regulatory Compliance/Certifications

Agency	Classification
CE	Compliant with the relevant CE product directives
CHINA-ROHS	Below maximum concentration value
ISO 9001:2015	Designed, manufactured and/or distributed under this quality management system
REACH-SVHC	Compliant as per SVHC revision on <a href="http://www.commscope.com/ProductCompliance">www.commscope.com/ProductCompliance</a>
ROHS	Compliant

